

## ABOUT HALF MOON

Half Moon is the UK's leading small-scale young people's venue and touring company. We are a local organisation with a national remit, committed to supporting artists and young people at every stage of their creative development. Working from our base in East London, we specialise in new writing and artform development, acting as a gateway organisation that provides pathways for progression and experimentation.

Our wide-ranging programme reaches 50,000 annually and engages those who are often excluded from arts activity. Our activity includes a season of professional plays for young audiences, national touring productions and an extensive creative learning programme, including seven youth theatres. Half Moon is a National Portfolio Organisation of Arts Council England and receives funding from the London Borough of Tower Hamlets.

Half Moon's digital archive is available at [stagesofhalfmoon.org.uk](http://stagesofhalfmoon.org.uk)

**"Half Moon is a pillar of creativity, uniting young people regardless of race, gender, and ability."**  
TIME OUT LONDON

## FOR HALF MOON

**HEAD OF CREATIVE LEARNING**  
**COMMUNICATIONS MANAGER**  
**CLEANER**  
**PRODUCTION and TECHNICAL MANAGER**  
**PRODUCER (CREATIVE LEARNING)**  
**ADMINISTRATIVE DIRECTOR**  
**DIRECTOR/CEO**  
**VENUE and PROGRAMMES ADMINISTRATOR**

Beccy Allen  
Stephen Beeny  
John Bunker  
Phil Clarke  
Androulla Constantinou  
Jackie Eley  
Chris Elwell  
Faye Guy

## SUPPORTING HALF MOON

Half Moon is a registered charity that is dependent on the support of individuals, companies, trusts and foundations. Each year we need to raise more than half of our turnover to support our various activities and keep our prices affordable. Support Half Moon today and help us to deliver our vital programme of work.

[halfmoon.org.uk/support-us](http://halfmoon.org.uk/support-us)

 **halfmoontheatre**  
 **@halfmoontheatre**  
 **halfmoon\_theatre**  
 **halfmoontheatre**

[halfmoon.org.uk](http://halfmoon.org.uk)  
[admin@halfmoon.org.uk](mailto:admin@halfmoon.org.uk)

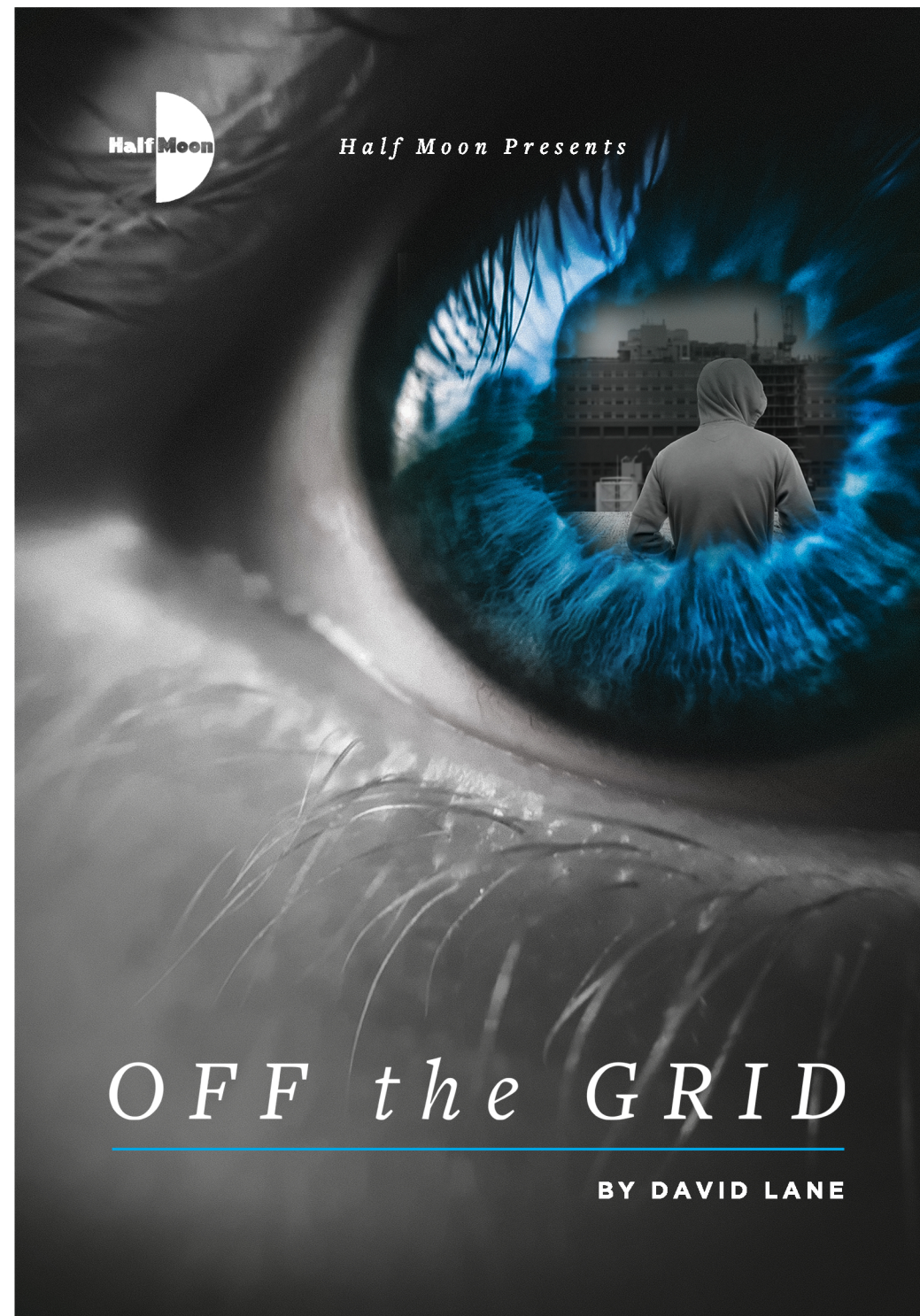


Photography by Stephen Beeny



Supported using public funding by  
**ARTS COUNCIL  
ENGLAND**

Half Moon Registered Company 2479179 | Half Moon Registered Charity 1010192





HALF MOON PRESENTS

# OFF the GRID

BY DAVID LANE

A SHOCKING HUMAN STORY NAVIGATING  
THE UNDERBELLY OF A HIDDEN SOCIETY

*"I trade in my teenage years for you  
To protect you  
Create what I never had  
So you'll see how beautiful the world can be"*

Connor and Kelly are brother and sister. They share the same birthday, but ten years apart. Since the disappearance of their parents, when Kelly was four, they have been dependent on each other for survival. But what happens when you discover you've made the wrong decision? Forced to back down, do you sacrifice your beliefs in order to stay together?

Developed in partnership with young people, *Off the Grid* is an immersive new play that navigates a shocking and heartbreaking human story through the underbelly of a hidden society.

## DIRECTOR CHRIS ELWELL

In our home borough of Tower Hamlets in London, 53% of young people live in poverty. The number of families using foodbanks has grown significantly in the past two to three years. While statistics like this often feature in the headlines, what they do not record are the growing number of people in our society who fall out of the system – fall outside of the social safety net - and like the characters in our story, simply disappear, move 'off grid' and carve out a life as best they can.

Connor and Kelly survive by stealing from bins, or entertaining others waiting in the queue for charity handouts. To bring some comfort among the hardships, they make up stories. But what happens when reality and fiction start to blur? And when everything falls apart, is it ever possible to look back and remember what really happened, or is reinventing the truth the better option?

Based on factual experiences and researched and developed with teenagers affected by poverty, we hope that, by experiencing this production, audiences will not simply be passive onlookers, but be moved to become agents for change.

## PLAYWRIGHT DAVID LANE

I wanted to write a sibling story, but through that to explore the role of a parent. What might happen if you shouldered a young person, who had passion and creativity and hope, with the responsibilities of being a parent – and how does that conflict with the huge self-discoveries that occur when you change so much between the ages of 14 and 24?

What happens when the values that you've invested into creating a whole fictional world, for the benefit of somebody else's protection, are no longer compatible with how you see yourself?



THE STORY TAKES PLACE ACROSS TEN YEARS BETWEEN 2016 AND 2026

## CAST

**KELLY, LAYLA and FLORA  
CONNOR and NICK**

Jesse Bateson  
Bradley Connor

**RAYMOND VOICEOVER**

William Harrison-Wallace

## PRODUCTION TEAM

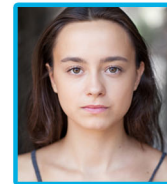
**DIRECTOR  
DESIGNER  
COMPOSER  
PRODUCTION MANAGER and  
LIGHTING DESIGNER  
TECHNICAL STAGE MANAGER**

Chris Elwell  
Verity Quinn  
Guy Connelly

Phil Clarke  
Miranda Paraskeva

Listen to the *Off the Grid* soundtrack @ [soundcloud.com/halfmoonoffthegrid](https://soundcloud.com/halfmoonoffthegrid)

*Off the Grid* is funded by The Royal Victoria Hall Foundation



## JESSE BATESON

Jesse trained at Rose Bruford College, BA (Hons) Acting, after studying at the BRIT School. Theatre credits include *The Fall* (Southwark Playhouse), *The Suppliant Women* (Young Vic), *The Host* (Yard Theatre). Credits whilst training include *The Glove Thief*, *Lion in the Streets*, *The House of Bernarda Alba*, *Titus Andronicus*, *The Crucible* and *All My Sons*. Jesse is one half of the folk duo June. @JesseBateson



## BRADLEY CONNOR

Bradley trained at The Royal Central School of Speech and Drama, BA (Hons) Acting (Musical Theatre). He was also a member of Youth Music Theatre UK. Theatre credits include *The Accordion Shop* (National Theatre and Soho Theatre), *Terry Pratchett's Soul Music* (Rose Theatre). Credits whilst training include *I'm Afraid Of Americans*, *A Chorus Line*, *The Country Wife*, *Merrily We Roll Along*, *Antigone*, *A Midsummer Night's Dream*. @Bradd\_Connor

## THANK YOU

David Ovenden (production photography); Billy Paine (flyer and poster design); Andy Shewan and Adam Nee (set build and painting); Beau Allton-Nee (props); Comets, Sunbeam and Moonbeam Youth Theatres (drawings); Holly Kasselder (UEL Student Placement); Y9/10/11 students who helped through the various stages of script development from: Bishop Challoner Catholic Federation of Schools, Bow School, Central Foundation Girls' School, George Green's School, Langdon Park School, Leyton Sixth Form College, London Enterprise Academy, Mulberry UTC, Oaklands School, Raine's Foundation School, St Michael's Catholic College, St Paul's Way Trust School, School 21, Sir John Cass's Foundation and Redcoat School, and Swanlea School; and the Half Moon team.