

Halfmoon

www.halfmoon.org.uk

Baa Moo
**YELLOW
DOG**

By Chris Elwell
Illustrated by
Alison Cartledge



This is Ash.

Ash lives with his Mum, on the third floor, flat 4, with a big red door, by the playground with swings and things, and a merry-go-round.

But Ash thinks that no one wants to play or share a strawberry ice-cream sundae.



What can Ash see?

High in the sky, bright blue
and pink birds fly.

Laughing, Ash
runs after the birds
over the rickety
bridge, through
the gate, along
the cobbled path...

...and finds a nest with twigs, leaves,
fluffy feathers and some eggs.

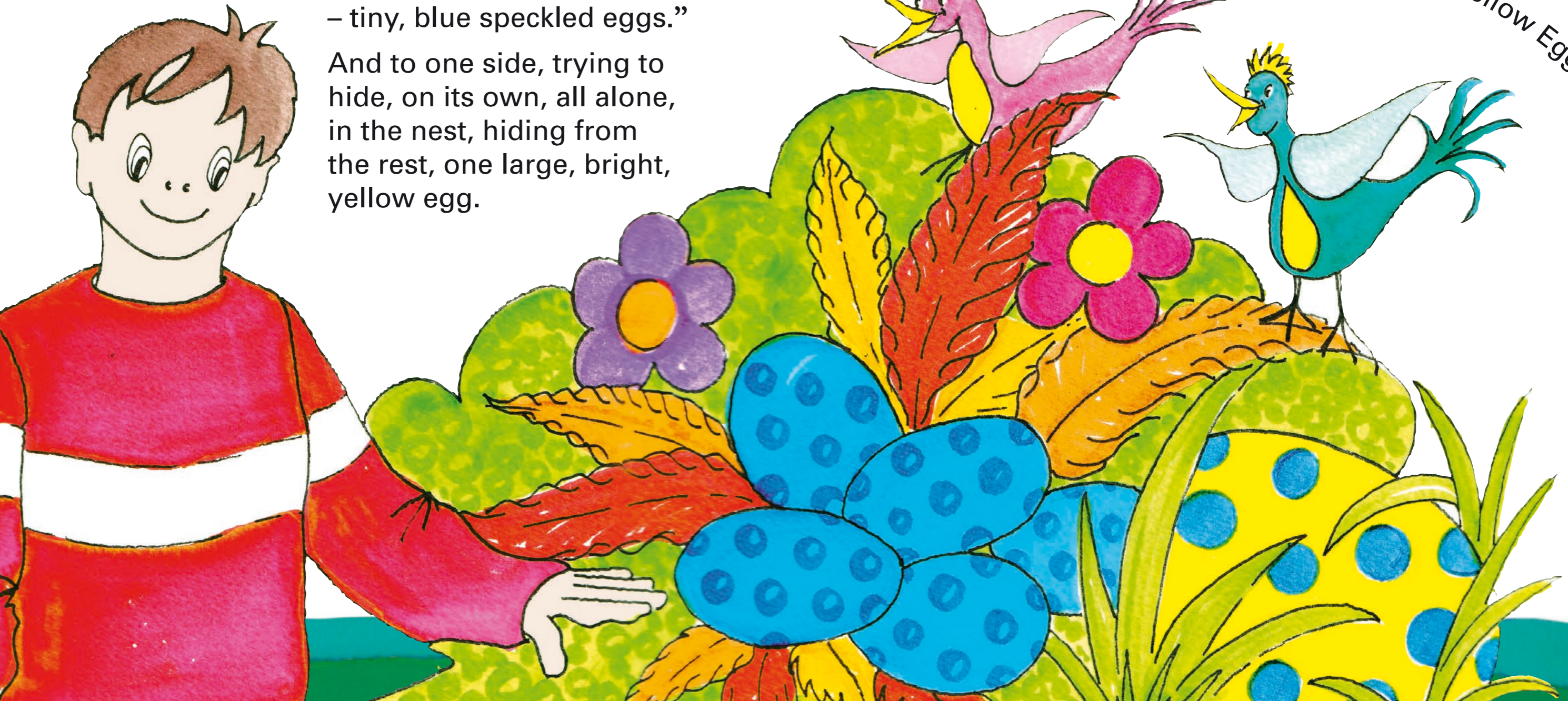


Ash can count.

“One, two, three, four, five
– tiny, blue speckled eggs.”

And to one side, trying to
hide, on its own, all alone,
in the nest, hiding from
the rest, one large, bright,
yellow egg.

“I’ll be your friend, Yellow Egg.”



Here is Ash.



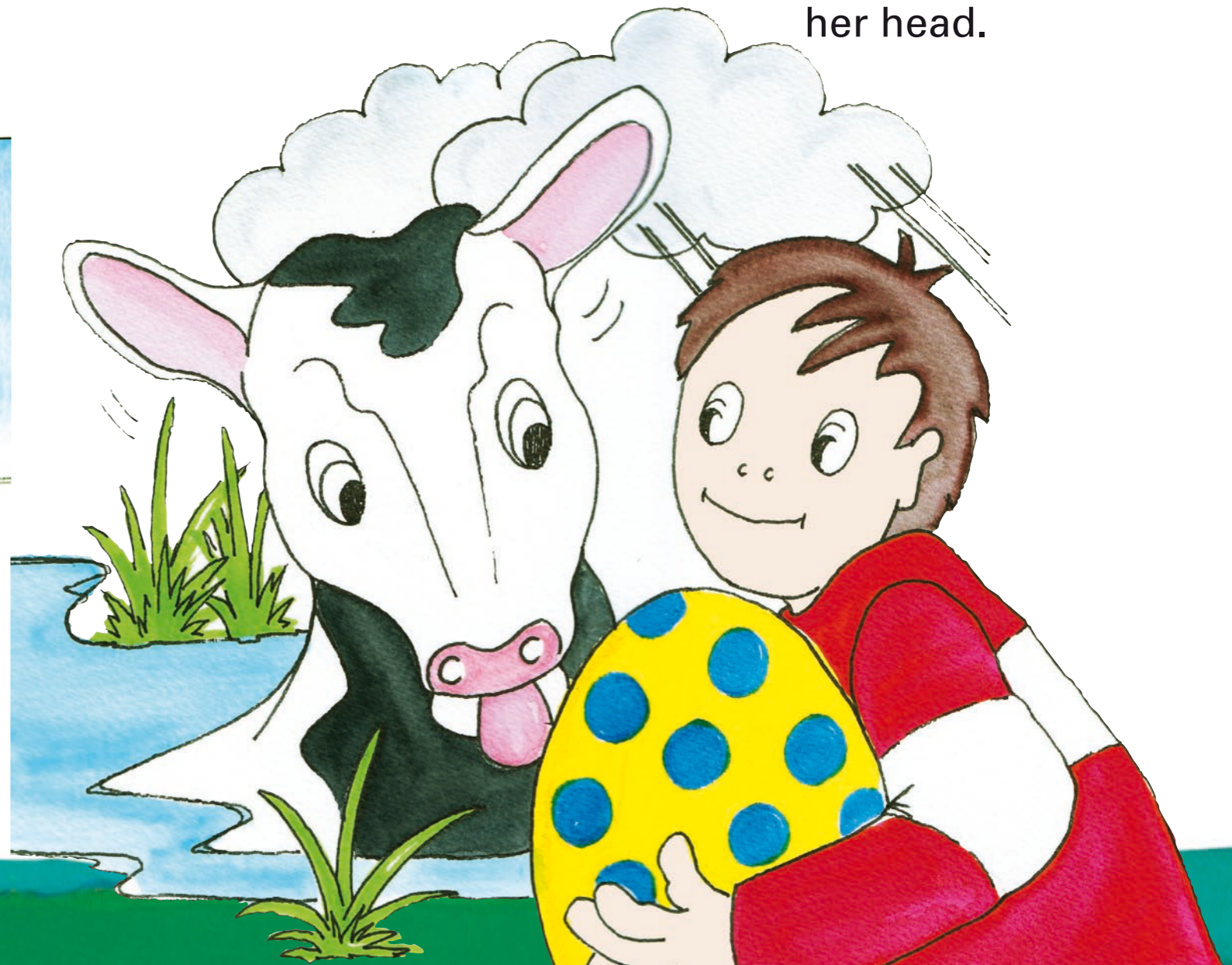
Ash is playing with the big yellow egg on his head – rolling, jumping, spinning...

“Cock-a-doodle-do!”

Look, there’s a black and white cow in the pond!

“Excuse me Mrs Cow, or are you a chicken, as you went cock-a-doodle-do and not moo like I thought all cows do? Is this your egg?”

The cow shakes her head.



Where is Ash?
Ash is by a tree.
Ash wants to
pick an apple.
He stretches
on tiptoe, but
can't reach. Ash
decides to climb
the tree.



“Baa! I am Horse.
I live in this tree.”
“Is this your egg?”
asks Ash.
“No, but if you climb
up on my back,
I might be able to
help. Hold on tight!”

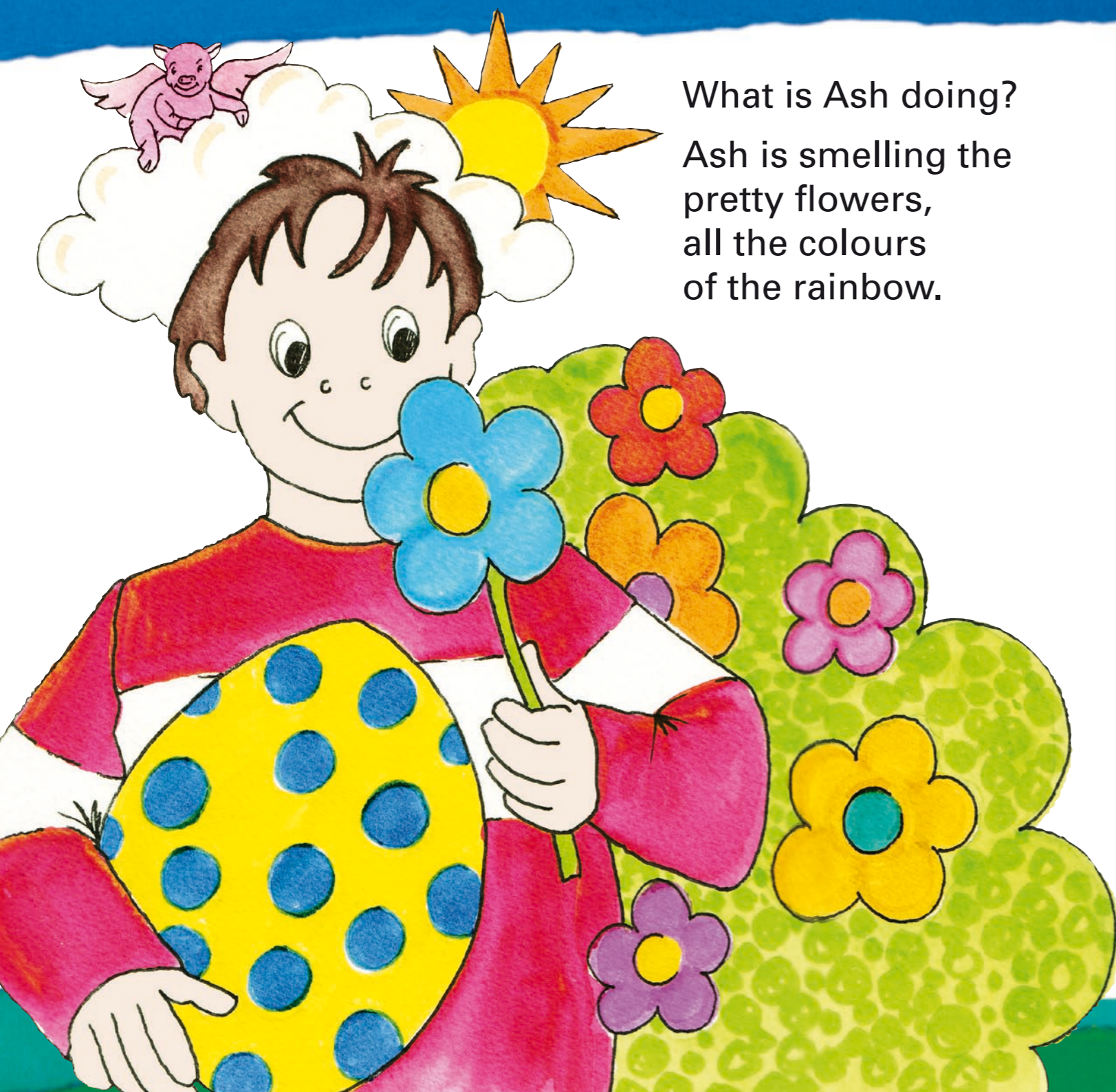


Look at Ash.

Ash is flying among the clouds with Yellow Egg.

“Look, below, it’s my Mum, look at her, small like a mouse. Look at the swings and all the other things and the swimming pool, a tiny house. Cool!”



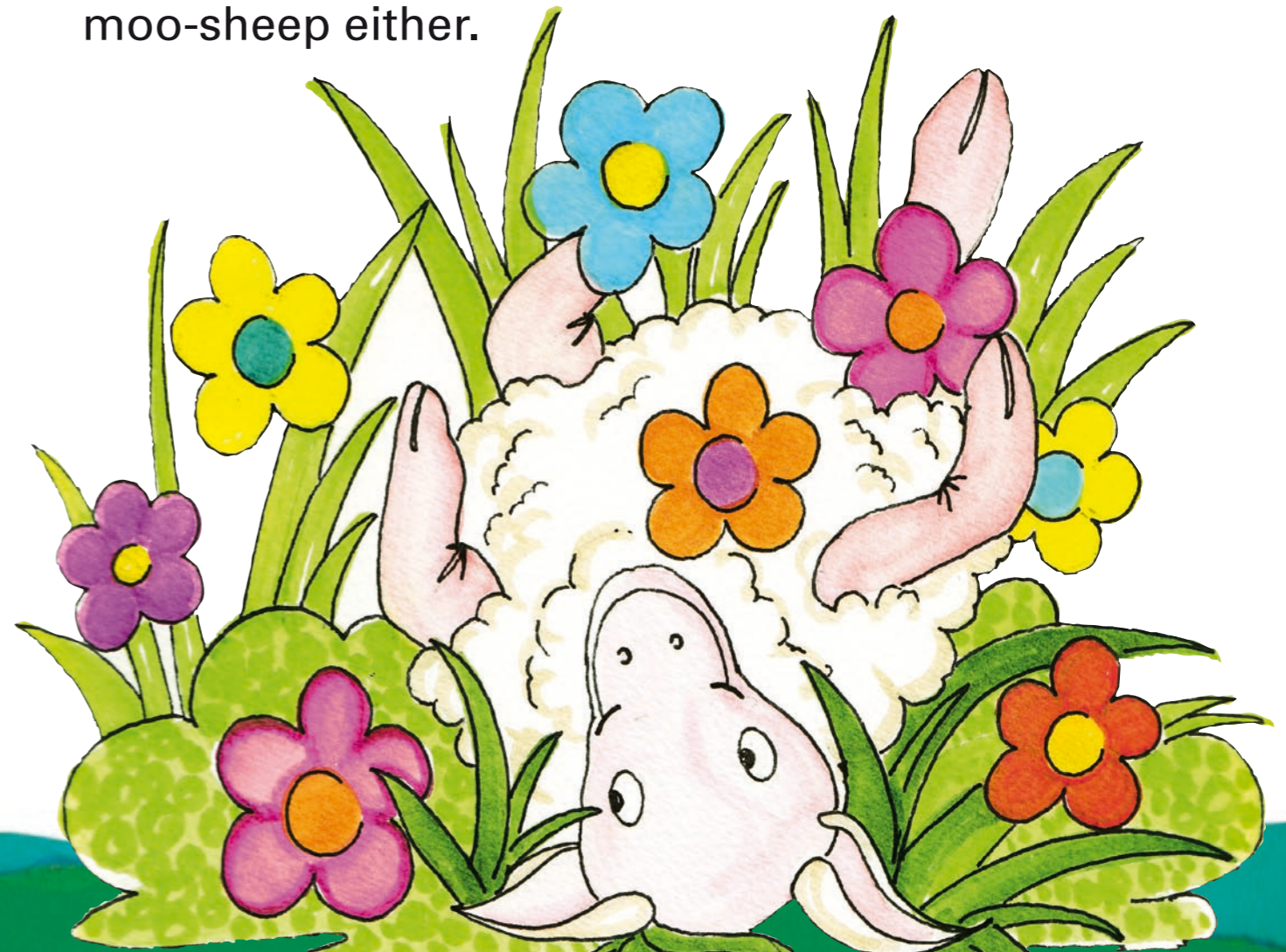


What is Ash doing?
Ash is smelling the
pretty flowers,
all the colours
of the rainbow.

“Mooooooo! Help!”

A sheep is stuck upside down in the flower bed.
Ash bravely pulls the sheep free and asks:
“Is this your egg?”

But Yellow Egg doesn't belong to the
moo-sheep either.





Ash and Yellow Egg are lost.

“I know I am very small, but with you, Yellow Egg, I am very brave.” says Ash.

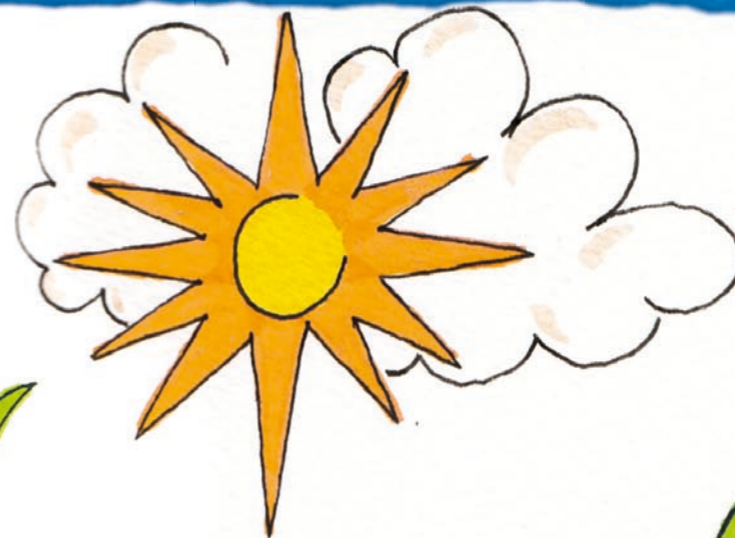
But who does Yellow Egg belong to? Ash still doesn't know.

Where is Ash?



Ash is back at the nest where he found Yellow Egg.

“What should I do, Yellow Egg? I asked the horse that flew, I asked the sheep that moo-ed, I asked the cow that cock-a-doodle-do-ed. But no-one knew.”



“Egg, it’s time to go home. My Mum will be expecting me.”

Ash hears a noise. It is Yellow Egg. Yellow Egg is starting to crack.



What does Ash see?

A dog! There is a yellow dog inside the egg!
Yellow Dog is licking Ash's face and wagging its tail.
Ash and Yellow Dog can be friends.



Ash has found someone who wants to do the things he likes to do... someone to play with.

“Let's go home and tell my Mum about you, Yellow Dog.”

This storybook accompanies Half Moon's professional theatre production of the same title, *Baa Moo Yellow Dog*, performed in English and British Sign Language (BSL), touring theatres and venues nationally from February to April 2009. The book is produced as part of an outreach programme for schools, Children's Centres and other community settings. The outreach programme includes a series of creative workshops inspired by the production for 2 to 5 year olds and their leaders, carers and parents.

Half Moon's Early Years work is a wonderful tool for learning and development. Creative intervention at this very early age can make a real difference to children's future achievements – socially and academically. This outreach programme focuses particularly on speech and language development, family learning and engaging children who find it difficult to join in or express themselves. The sessions provide a series of imaginative encounters combining drama, live music, movement and storytelling.

Original Theatre Production Credits

Ash Daniel Broadhurst

Play Donna Mullings

Writer/Director Chris Elwell

Designer Alison Cartledge

Composer Robert Lee

Production Manager/Lighting Designer Fred Beaufort

Stage Manager/Assistant Director Vicki Hambley

Associate Artist Jeni Draper

BSL Consultant Samantha Moulton-Thomas

Rehearsal/Tour Interpreters Peter Abraham, Victoria Fenner, Sula Gleeson, Alison Pottinger

Associate Director (Outreach Programme) Angela Michaels

Projects Manager (Outreach Programme) Amy Jones

Tel: 020 7265 8138

SMS Text: 020 7709 8907

admin@halfmoon.org.uk

www.halfmoon.org.uk

43 Whitehorse Road, London E1 0ND

£4.00

About the Company

Half Moon Young People's Theatre is a vibrant theatre for young people in Tower Hamlets offering two inter-locking strands of activity:

- producing and presenting professional theatre at its base, in venues and in youth, schools and community settings;
- providing an extensive participatory programme, including youth theatres, school and community projects.

Half Moon works exclusively with young people from birth to age 18 – and through them, with their teachers, carers and parents – placing a particular emphasis upon engaging those often excluded in terms of culture (ethnicity) and ability (disability).

Half Moon is a unique resource utilised by over 32,000 individuals each year. We have recently purchased our building and have developed plans to create a more welcoming and accessible venue which will become a beacon theatre for young people. Half Moon is funded by Arts Council England and London Borough of Tower Hamlets.

Half Moon is grateful to The Wakefield & Tetley Trust, The Austin and Hope Pilkington Trust, St Katharine & Shadwell Trust, The Royal Victoria Hall Foundation, Ernest Cook Trust and Sir Winston Churchill Educational Trust For The Deaf for their support of *Baa Moo Yellow Dog* and the associated outreach programme.